



LIMEDAS



LIME INSTRUMENTS

1187 BRITTMOORE ROAD
HOUSTON, TEXAS 77043

WWW.LIMEINST.COM

24 HR SERVICE 1.888.991.LIME

The Lime Instruments LIMEDAS system includes all of the necessary components to monitor any industrial application such as Coiled Tubing, N2, CO2, Acid unit, and more.

- Real-time data acquisition
- Integrates with coiled tubing and hydraulic fracturing support equipment
- In-house software training
- Worldwide field service

LIME INSTRUMENTS

LIMEDAS DATA ACQUISITION SYSTEM

The Lime Instruments LIMEDAS system includes all the necessary components to monitor any industrial application such as Coiled Tubing, N2, CO2, or Acid units.



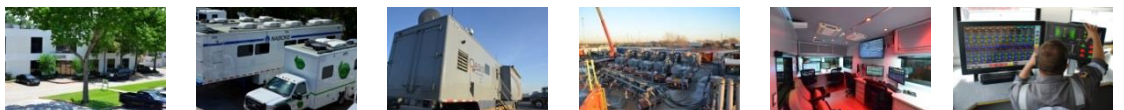
SOFTWARE COMPONENTS

- LIMEDAS is a feature rich, purpose designed user interfaces for both operating, charting, and logging
- Ruggedized embedded controller with real-time support for logging and analysis
- Charting interface plots up to 10 channels on one graph

HARDWARE COMPONENTS

- Standard cable and sensor package allows real-time readings for any measurement required...weight, pressure, speed, depth, etc.
- Two independent displays for redundant operation
- Full integration with LIMECOIL and LIMEFAC units.
- Injection molded and completely sealed cables

Pressure 1	Pressure 2	Pressure 3	Stage	Inline DMAT	Blender DMAT	Suction Rate	Discharge Rate
6378	6245	1290	1	0.30	2.06	67.3	70.6
Auger 1 Rate	Auger 2 Rate	Auger 3 Rate	Auger PSA	Blender Tub	Hydration Tub	Suct Job Total	Disch Job Total
0	1619	2367	1	121	86	1255	1283
Dry1 Rate	Dry1 lbs/1000	Dry1 Total	Viscosity	pH	Inlet Valve %	Chem Add Suction Rate	Suction Stage Tot
8.6	3.1	645	0.00	8.70	103	67	23542
Liquid1 Rate	Liquid1 Stage Total	Liquid1 Total	Liquid3 Rate	Liquid 3 Stage Total	Liquid 3 Job Total	Hydration Suction Rate	Suction Stage Tot
1.2	588	520	0.1	0	0	65	24975
Liquid2 Rate	Liquid2 Stage Total	Liquid2 Total	Gel Rate Primary	Gel gal/1000	Gel Total	Total Barrels Pumped	Disch Sand Stage Total
8.0	2869	2467	19	7	220	5750	15112



BUILDING LEADING-EDGE CONTROLS AND INSTRUMENTATION SYSTEMS