



# LIMETWINPUMP



## LIME INSTRUMENTS

1187 BRITTMOORE ROAD

HOUSTON, TEXAS 77043

[WWW.LIMEINST.COM](http://WWW.LIMEINST.COM)

24 HR SERVICE 1.888.991.LIME

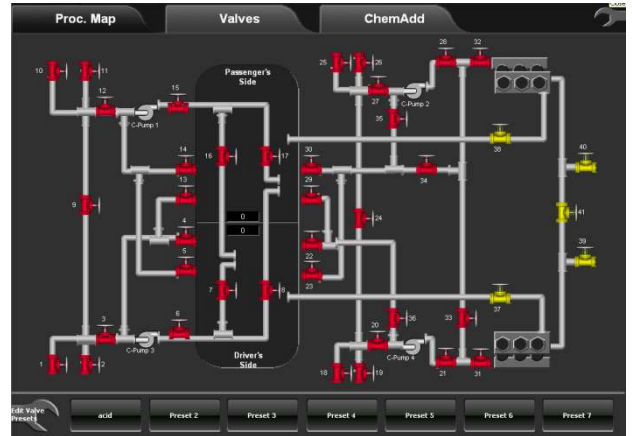
LIMETWINPUMP control system will work with any manufacture's equipment and provides the latest in pump control technology ruggedized to cater to the oilfield's demands.

- Redundant operator controls for greater reliability
- Dual armored 15" high-bright sunlight-viewable touch screen displays
- Wired or wireless connectivity for easy spread integration

# LIME INSTRUMENTS

## LIMETWINPUMP CONTROL SYSTEM

LIMETWINPUMP control system combines precision measurement and control with ruggedized oilfield ready toughness.



### SOFTWARE COMPONENTS

- LIMETWINPUMP controls is designed to monitor and control engines and transmissions from all major manufacturers as well as give on-board chemical additive control
- Controls 3 chemical pumps, 4 c-pumps, and automate a valve layout for safe hands-free operation
- Ethernet based communications monitors the following: J1939 Can Bus (engine and transmission parameters) and Discharge Pressure, Rate, Total, and Temperatures

### HARDWARE COMPONENTS

- Ruggedized controller with real-time support for deterministic control, logging, and analysis
- Local control panel features two ruggedized 15" sunlight-viewable touchscreen displays
- Customized enclosure protects from heat, water, dust, and other debris



### ADDITIONAL COMPONENTS

- Redundant operator controls via local screen, handheld remote, laptop, or data van
- Capable of linking up to five pumps and run them from a climate-controlled cabin
- On-the-fly over-pressure trip set points
- Wireless controls with dynamic IP addressing



BUILDING LEADING-EDGE CONTROLS AND INSTRUMENTATION SYSTEMS