



LIMEDAS



LIME INSTRUMENTS

1187 BRITTMOORE ROAD
HOUSTON, TEXAS 77043

WWW.LIMEINST.COM

24 HR SERVICE 1.888.991.LIME

The Lime Instruments LIMEDAS system includes all of the necessary components to monitor any industrial application such as Coiled Tubing, N2, CO2, Acid unit, and more.

- Real-time data acquisition
- Integrates with coiled tubing and hydraulic fracturing support equipment
- In-house software training
- Worldwide field service

LIME INSTRUMENTS

LIMEDAS DATA ACQUISITION SYSTEM

The Lime Instruments LIMEDAS system includes all the necessary components to monitor any industrial application such as Coiled Tubing, N2, CO2, or Acid units.



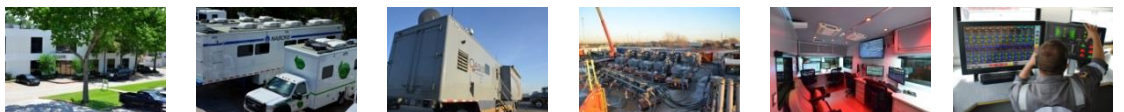
SOFTWARE COMPONENTS

- LIMEDAS is a feature rich, purpose designed user interfaces for both operating, charting, and logging
- Ruggedized embedded controller with real-time support for logging and analysis
- Charting interface plots up to 10 channels on one graph

HARDWARE COMPONENTS

- Standard cable and sensor package allows real-time readings for any measurement required...weight, pressure, speed, depth, etc.
- Two independent displays for redundant operation
- Full integration with LIMECOIL and LIMEFAC units.
- Injection molded and completely sealed cables

| Pressure 1 | Pressure 2 | Pressure 3 | Stage | Inline DMAT | Blender DMAT | Suction Rate | Discharge Rate | |
|--------------|------------|---------------------|---------------|------------------|----------------------|--------------------|------------------------|------------------------|
| 6378 | 6245 | 1290 | 1 | 0.30 | 2.06 | 67.3 | 70.6 | |
| Auger 1 Rate | | Auger 2 Rate | Auger 3 Rate | Auger PSA | Blender Tub | Hydration Tub | Suct Job Total | Disch Job Total |
| 0 | | 1619 | 2367 | 1 | 121 | 86 | 1255 | 1283 |
| Dry1 Rate | | Dry1 lbs/1000 | Dry1 Total | Viscosity | pH | Inlet Valve % | Chem Add Suction Rate | Suction Stage Tot |
| 8.6 | | 3.1 | 645 | 0.00 | 8.70 | 103 | 67 | 23542 |
| Liquid1 Rate | | Liquid1 Stage Total | Liquid1 Total | Liquid3 Rate | Liquid 3 Stage Total | Liquid 3 Job Total | Hydration Suction Rate | Suction Stage Tot |
| 1.2 | | 588 | 520 | 0.1 | 0 | 0 | 65 | 24975 |
| Liquid2 Rate | | Liquid2 Stage Total | Liquid2 Total | Gel Rate Primary | Gel gal/1000 | Gel Total | Total Barrels Pumped | Disch Sand Stage Total |
| 8.0 | | 2869 | 2467 | 19 | 7 | 220 | 5750 | 15112 |



BUILDING LEADING-EDGE CONTROLS AND INSTRUMENTATION SYSTEMS