



LIME DATAVAN



LIME INSTRUMENTS

1187 BRITTMOORE ROAD

HOUSTON, TEXAS 77043

WWW.LIMEINST.COM

24 HR SERVICE 1.888.991.LIME

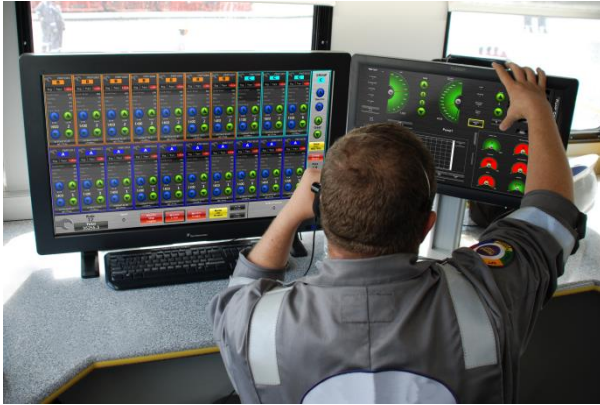
The Lime Instruments 42' data van trailer is the heart of the LIMEDATAVAN system. Capable of standing up to the toughest oilfield environments while providing the most detailed data acquisition and controls possible.

- Real-time data acquisition
- Control up to 20 pumps simultaneously
- Seamlessly integrates with other LimeFrac equipment

LIME INSTRUMENTS

LIMEDATAVAN 42' DATA VAN TRAILER

The Lime Instruments 42' data van trailer is the heart of the LIMEDATAVAN system. Capable of standing up to the toughest oilfield environments while providing the most detailed data acquisition and controls possible



CUSTOM LAYOUT

- Display and control up to 20 pumps from the multipump station
- Remotely control blender from the data van
- 55" display capable of broadcasting up to four (4) screens on one display
- Network architecture features built-in redundancy for greater reliability
- VSAT satellite and cell phone booster for improved on-site connectivity
- Remote monitoring and technical support via satellite
- DirecTV HDTV satellite receiver

CUSTOM SOFTWARE

- Rugged controller with Real-Time support for deterministic control, logging, and analysis
- Windows 7 embedded software designed to run LimeFrac Data Acquisition
- Lime Instruments Charting & Analysis Data Acquisition Graphical Software
- Wellbore diagram displays realtime downhole data
- Post job and graphical reports



ADDITIONAL COMPONENTS

- Theater style customer seating and 8' slide out for added comfort
- DirecTV HDTV satellite receiver
- Cold weather, camera, and radio packages available
- DMAT (Density Meter and Transmitter) drop in replacement for TN SGD transmitter. Outputs in SGU, Density, and Concentration
- Seamlessly integrates with LimeFrac Pumps, Hydration control systems, and Blender control systems, and Chem Add Control systems



BUILDING LEADING-EDGE CONTROLS AND INSTRUMENTATION SYSTEMS